

BIOGRAPHIES



PING AN worked as a seismic interpreter with Geophysical Exploration Team, Ministry of Coal Industry of China for two years after he earned his diploma in exploration geophysics in 1976 from Polytechnic School of Coal Industry in China. He received his B.Sc. in geology in 1982 from Beijing University and his M.Sc. in geophysics in 1985 from University of Science and

Technology of China. He was a research associate with State Seismological Bureau of China from 1985 to 1987. Since 1988 he has been a Ph.D. student in geophysics at The University of Manitoba and will receive his degree in early 1992. In 1991 he worked as a summer exploration geophysicist with Esso Resources Canada Ltd. His Ph.D. thesis research is focused on artificial intelligence applications to resource exploration. He is also interested in exploration seismology. He is a SEG student member.

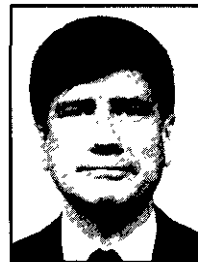


R. JAMES BROWN is presently an Associate Professor in the Department of Geology and Geophysics at The University of Calgary. His current research interests include topics in reflection-seismic theory and interpretation, earthquake seismology and electromagnetics. Jim received his B.Sc. (Honours) in mathematics and physics in 1965 and his M.Sc. in geophysics in 1968 from The University of Manitoba. He then obtained a Ph.D. in seismology from Uppsala University (Sweden) in 1972. Since then he has held research/teaching positions at The University of Manitoba, the Norwegian Seismic Array (NORSAR), the University of Luleå (Sweden) and The University of Sydney (Australia). In 1980 Jim joined The University of Calgary. He is a member of the ASEG, CGU, CSEG, EAEG, EGS, NOFTIG, SEG and SSA.



NEIL L. ANDERSON has a B.Sc. in geological engineering, an M.Sc. in crustal seismology and a Ph.D. in seismic stratigraphy. The latter degree, obtained at The University of Calgary, was awarded for his contribution to carbonate seismology. Neil has written course texts entitled Applied Carbonate Seismology, Applied Clastic Seismology and Devonian Salts and coau-

thored papers presented and/or published in North America, Europe and Asia. He is coordinating, coediting and coauthoring the joint CSEG/CSPG Geophysical Atlas of Western Canadian Hydrocarbon Pools and has been invited to lecture at both the CSPG short course on carbonates and the joint CSEG/CSPG course based on the Geophysical Atlas. Neil is currently Assistant Professor at Ohio University and a member of the CSEG, SEG and APEGGA.



JOHN B. DuBOSE JR. received a B.A. from the University of Texas and a Ph.D. (1979) from Texas A. M. University, both in Physics. Formerly with Union Pacific Resources, he is presently with Cogniseis Development. His primary interests are automatic statics and trace inversion. He is a member of the SEG.

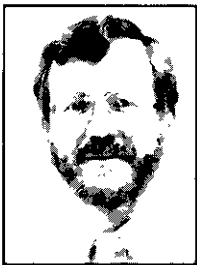


KEN DUCKWORTH obtained a B.Sc. in physics in 1960 from the University of Leeds and a Ph.D. in applied geophysics in 1964 from the same university. In 1964, he joined the Darwin Uranium Group of the Australian Bureau of Mineral Resources where he was involved in uranium prospecting associated with the Rum Jungle Mine. In 1968, he took a position as Assistant

Professor of Geophysics at The University of Calgary and is now an Associate Professor in the Department of Geology and Geophysics at the same university. Memberships include SEG, ASEG, CSEG, EAEG, and APEGGA. Research interests are in the development of mineral exploration methods with particular emphasis on the modelling of the behaviour of electromagnetic prospecting systems.



ERNEST R. KANASEWICH received a B.Sc. in physics in 1952 and an M.Sc. in 1960, both from the University of Alberta. His Ph.D. was obtained in 1962 from the University of British Columbia, Department of Physics, Geophysics. From 1952 to 1956 he was a geophysicist with Geophysical Service International Corp. and from 1969 to 1970 a Research Associate Professor at the California Institute of Technology. From 1963 until the present time, he has been at the University of Alberta where he has served as Assistant Chairman of the Department of Physics from 1969 to 1973 and acting Chairman from 1973 to 1974. In 1975, he was appointed a Fellow of the Royal Society of Canada. He holds an Honorary Life Membership in the Canadian Society of Exploration Geophysicists, was awarded the J. Tuzo Medal in 1988 and named McCalla Professor in 1989. Dr. Kanasewich's interests are in seismology, studies of the lithosphere, time series analysis and exploration geophysics.



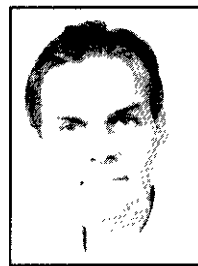
DON C. LAWTON received a B.Sc. (Honours) in geology and a Ph.D. in geophysics from the University of Auckland, New Zealand, in 1973 and 1979, respectively. From 1976 to 1979, he was employed by Amoco Mineral (N.Z.) Ltd. as a geophysicist, working in gold and base metal exploration. In 1979 he joined The University of Calgary where he is currently as Associate Professor of Geophysics in the Department of Geology and Geophysics. His research interests include seismic modelling, seismic stratigraphy, multicomponent seismic techniques and integrated geological and geophysical studies. He is a member of the SEG, CSEG and APEGGA.



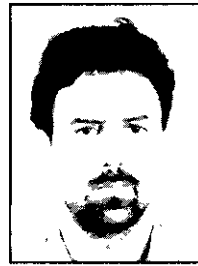
WOOLL M. MOON is a Professor of Geophysics at The University of Manitoba. He received a B.A.Sc., an M.Sc. and a Ph.D. from the University of Toronto (1970), Columbia University (New York) (1972) and University of British Columbia (1976), respectively. His current research interests include theoretical geophysics, digital image processing, airborne and satellite-borne geophysics, and crustal seismology. Dr. Moon is currently involved in geophysics application development research for the ERS-1 (European Space Agency), JERS-1 (NASDA, Japan) and RADARSAT (Canada) satellite programs. He is a member of CSEG, SEG, EAEG, AGU, CGU, IEEE (GRS), CAP and RAS (London).



DENISE F. POLEY graduated from Dalhousie University in 1982 with an Honours B.Sc. in geology, physics and mathematics. In 1988 she received a Ph.D. in geophysics from The University of Calgary. During 1978 to 1982 she was employed part-time with the Geological Survey of Canada at Bedford Institute of Oceanography in Nova Scotia where she worked on shallow marine geophysics in the Beaufort Sea. Dr. Poley has been with Shell Canada Ltd. since 1988. She worked as a senior research geophysicist at its Calgary Research Centre until July, 1991 and is presently working as a processing geophysicist at head office.



ANDY RENCZ is a Research Scientist with the Geological Survey of Canada, specializing in the analysis of remotely sensed data. He received his Ph.D. from the University of New Brunswick and concluded a post-doctoral fellowship at the GSC in 1980.



ANTONIS VAFIDIS received a B.Sc. (Honours) in physics from the University of Thessaloniki, Greece in 1981, an M.Sc. in applied geophysics from McGill University in 1984 and a Ph.D. in geophysics from the University of Alberta in 1988. Since 1988 he has been teaching applied geophysics at the Technical University of Crete. His research interests include numerical methods in modelling seismic waves and seismic applications on parallel computers.